



SEALFAST
THE SIMPLE SOLUTION

GAUGES

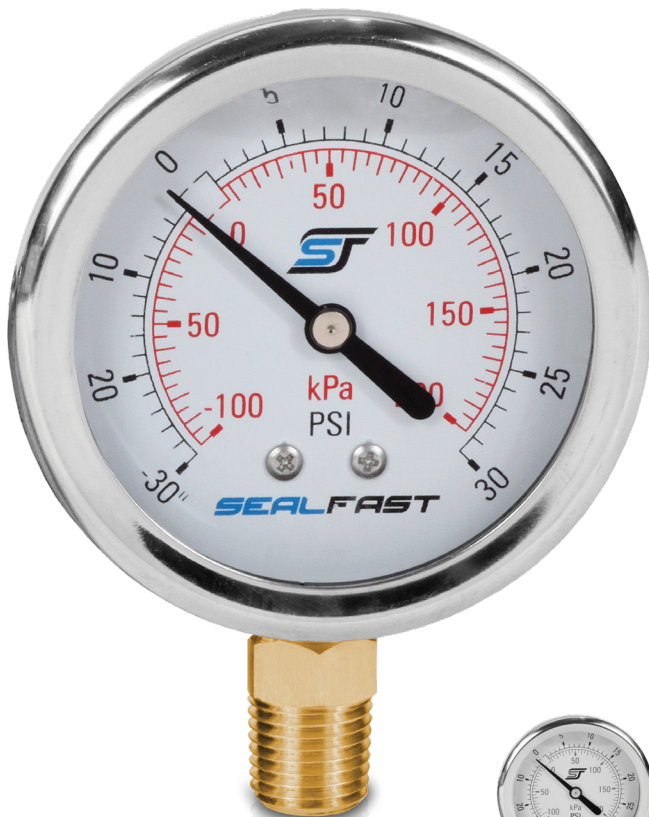


GAUGES - DRY

1 1/2" X 1/8" MOUNT -
STEEL CASE / BRASS INTERNALS

FEATURES & APPLICATIONS:

- Used in hydraulic and pneumatic systems, compressors, regulator machine, and suitable for fluid medium or gaseous which does not clog connection port.



LM

Lower mount



CBM

Center back mount



UC

U-Clamp

TECHNICAL DATA:

- CASE: Black Steel
- WINDOW: Glass
- INTERNAL: Copper Alloy
- CONNECTION: Brass
- ACCURACY: $\pm 3/2/3\%$ of span
- TEMPERATURE RANGE: -10°F to 150°F

STEEL CASE / BRASS INTERNALS

Face Size	Mount	PSI	Part #	Part #	Part #
1-1/2"	1/8" NPT		LM	CBM	UC
		Vacuum 0-30" Hg	---	G15302V	G15302UV
		15 psi / 103 kpa	G15151	G15152	G15152U
		30 psi / 200 kpa	G15301	G15302	G15302U
		60 psi / 400 kpa	G15601	G15602	G15602U
		100 psi / 700 kpa	G151001	G151002	G151002U
		160 psi / 1,100 kpa	G151601	G151602	---
		200 psi / 1,400 kpa	G152001	G152002	G152002U



Information contained on this page is for general information purposes only. Seal Fast Inc. assumes no responsibility for errors or omissions for this product.